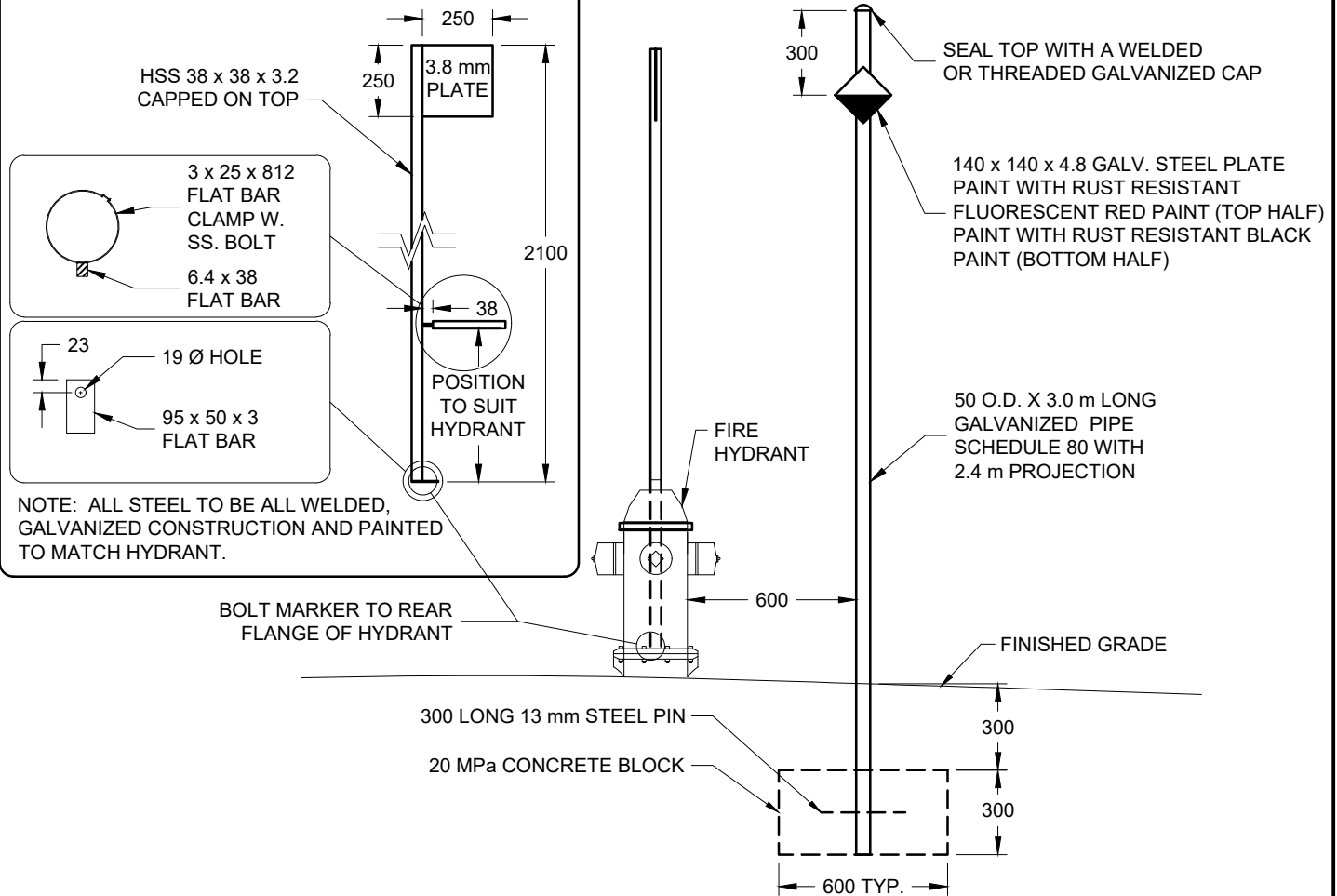


HYDRANT CONNECTED MARKER

ISOLATED HYDRANT MARKER



HSS 38 x 38 x 3.2
CAPPED ON TOP

3 x 25 x 812
FLAT BAR
CLAMP W.
SS. BOLT
6.4 x 38
FLAT BAR

23
19 Ø HOLE
95 x 50 x 3
FLAT BAR

NOTE: ALL STEEL TO BE ALL WELDED,
GALVANIZED CONSTRUCTION AND PAINTED
TO MATCH HYDRANT.

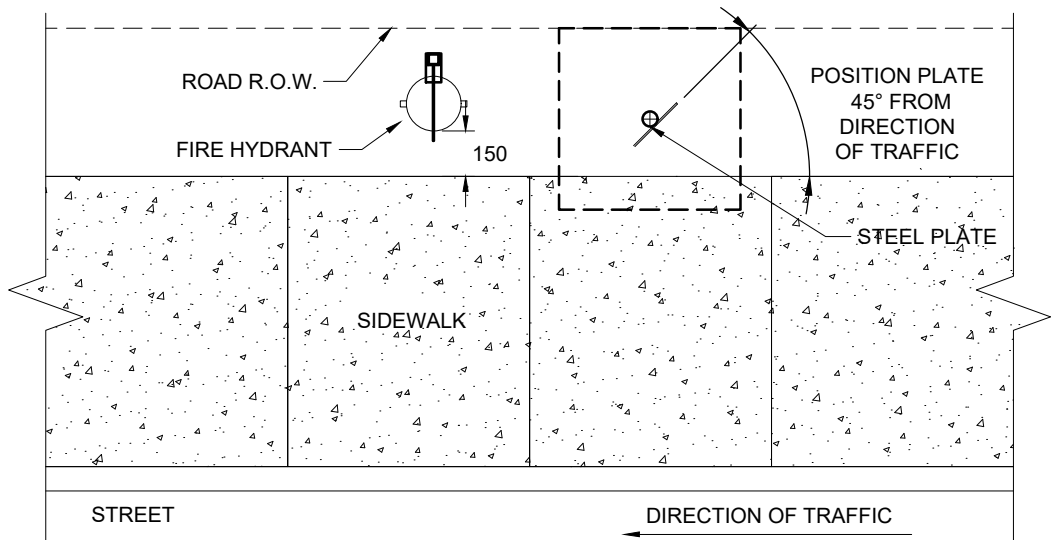
BOLT MARKER TO REAR
FLANGE OF HYDRANT

SEAL TOP WITH A WELDED
OR THREADED GALVANIZED CAP

140 x 140 x 4.8 GALV. STEEL PLATE
PAINT WITH RUST RESISTANT
FLUORESCENT RED PAINT (TOP HALF)
PAINT WITH RUST RESISTANT BLACK
PAINT (BOTTOM HALF)

50 O.D. X 3.0 m LONG
GALVANIZED PIPE
SCHEDULE 80 WITH
2.4 m PROJECTION

SECTION



PLAN

NOTES:

1. ALL DIMENSIONS ARE IN MILLIMETERS UNLESS OTHERWISE NOTED.
2. INSTALL HYDRANT CONNECTED MARKER OR ISOLATED HYDRANT MARKER TO SUIT PROJECT REQUIREMENTS
3. ALL WELDING TO BE IN ACCORDANCE WITH THE LATEST EDITION OF CSA W59.

**MUNICIPAL MASTER
SPECIFICATIONS**

HYDRANT MARKER

DRAWING NUMBER 04570

DATE: APRIL 2023

SCALE: N.T.S.