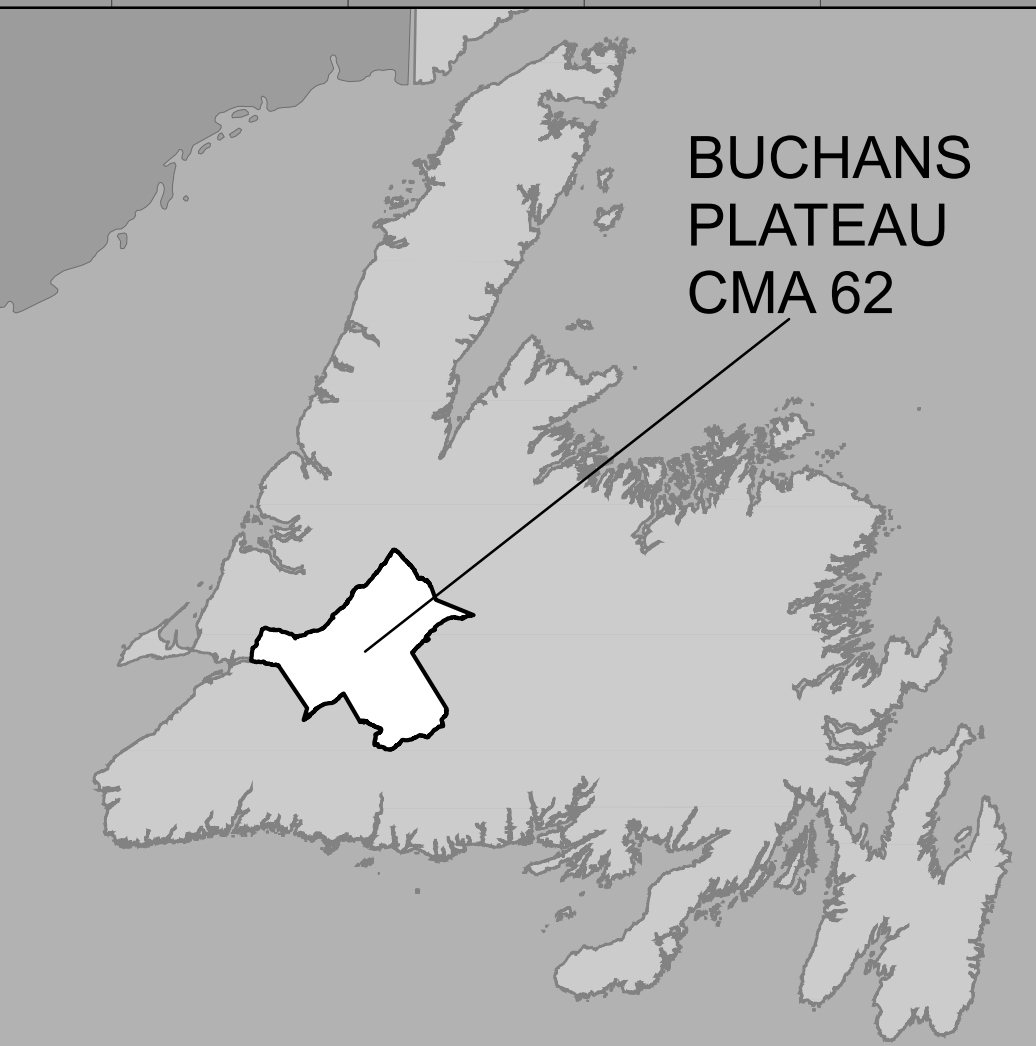
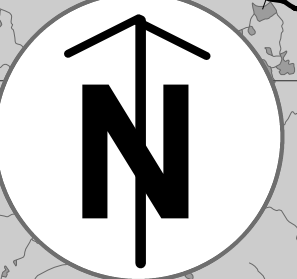


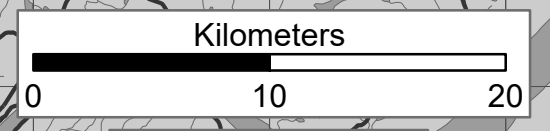
Buchans Plateau Newfoundland Caribou Management Area 62



BUCHANS
PLATEAU
CMA 62



1:320,000

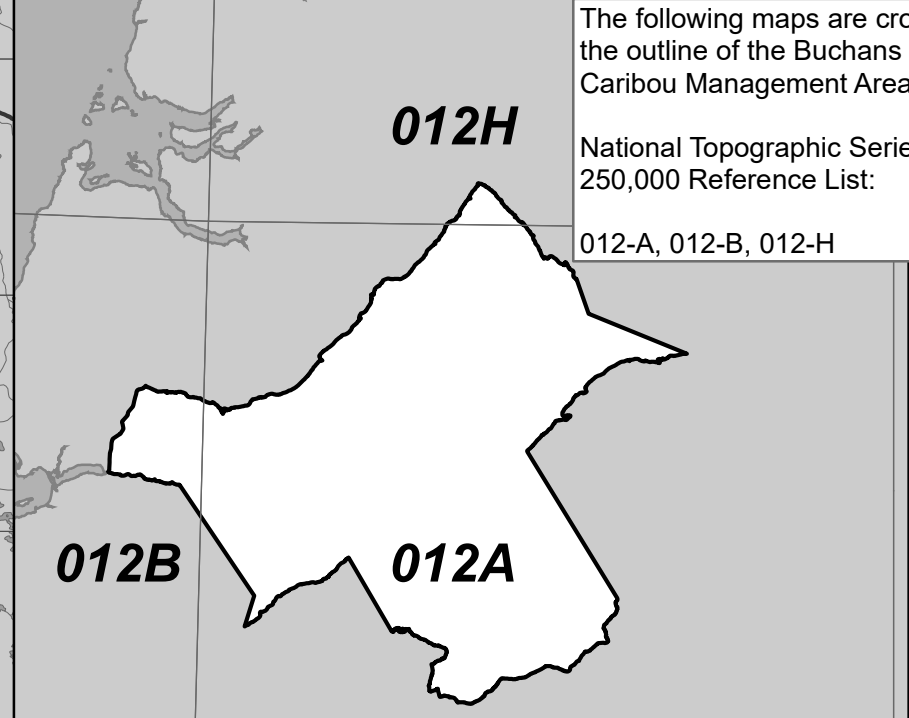


NAD1983 Zone 21N

CARIBOU MANAGEMENT AREA 62 BUCHANS PLATEAU

All that area of the Island of Newfoundland bounded by a line beginning at the Trans Canada Highway, TCH, Route 1 bridge crossing Southwest Brook; then following the TCH in a generally north by northeasterly direction to its intersection with the Camp 33 Road; then following Camp 33 Road in an easterly direction to the southwestern extremity of Grand Lake; then following the southern and eastern shorelines of Grand Lake in an easterly, then northeasterly direction to its confluence with Hinds Brook; then following the southern bank of Hinds Brook in a southeasterly direction to Hinds Lake; then following the southwestern shoreline of Hinds Lake in a southeasterly direction to the southwestern abutment of Eclipse Dam at said lake's southeastern extremity; then following a straight line in a southeasterly direction to the mouth of a brook in the southwestern extremity of Buchans Lake; then following a straight line in a southeasterly direction to the southwestern abutment of the Exploits Dam on Red Indian Lake; then following the southeastern shoreline of Red Indian Lake in a generally southwesterly direction to the mouth of a brook at UTM coordinates 495652 metres east and 5379530 metres north; then following a straight line in a southeasterly direction to the intersection of the forest access road with an unnamed brook at UTM coordinates 515108 metres east and 5348718 metres north; then following said forest access road in a generally southwesterly, then westerly, then northwesterly direction to the southwestern abutment of a bridge at UTM coordinates 470894 metres east and 5340926 metres north; then following the southern shoreline of Victoria Lake Reservoir in a westerly direction to an unnamed river into its southwestern extremity at UTM coordinates 467058 metres east and 5340999 metres north; then following a straight line in a northwesterly direction to the confluence of Lloyds River with Lloyds Lake; then following the southeastern bank of Lloyds River to its confluence with King George IV Lake at UTM coordinates 435714 metres east and 5341543 metres north; then following a straight line in a northeasterly direction to a brook at the eastern extremity of Cormacks Lake at UTM coordinates 437534 metres east and 5348133 metres north; then following a straight line in a northwesterly direction to a point on the southeast branch of Southwest Brook at UTM coordinates 421602 metres east and 5371355 metres north; then following the northern bank of Southwest Brook in a generally westerly direction to the point of commencement.

National Topographic Series Reference Index 1:250000



The following maps are crossed by the outline of the Buchans Plateau Caribou Management Area 62.
National Topographic Series Map 250,000 Reference List:
012-A, 012-B, 012-H

REGIONAL FORESTRY OFFICES
Labrador, Goudie Building, P.O. Box 3014,
Station B, Happy Valley, A0P 1E0,
896-2732
Western, Forestry Building, Massey Dr., P.O.
Box 2006, Corner Brook, A2H 6J8,
637-2370
Eastern, Gander Public Building, Airport Blvd,
P.O. Box 2222, Gander, A1V 2N9,
256-1450

PACK IT IN - PACK IT OUT
Garbage and litter on our landscape is becoming a serious problem. The best and only alternative for garbage is a Pack It In, Pack It Out policy. You carried in all those containers, boxes - packages when they were full; it's a lot easier to carry them out when they are empty. Please take your garbage home with you and dispose of it in the proper manner.

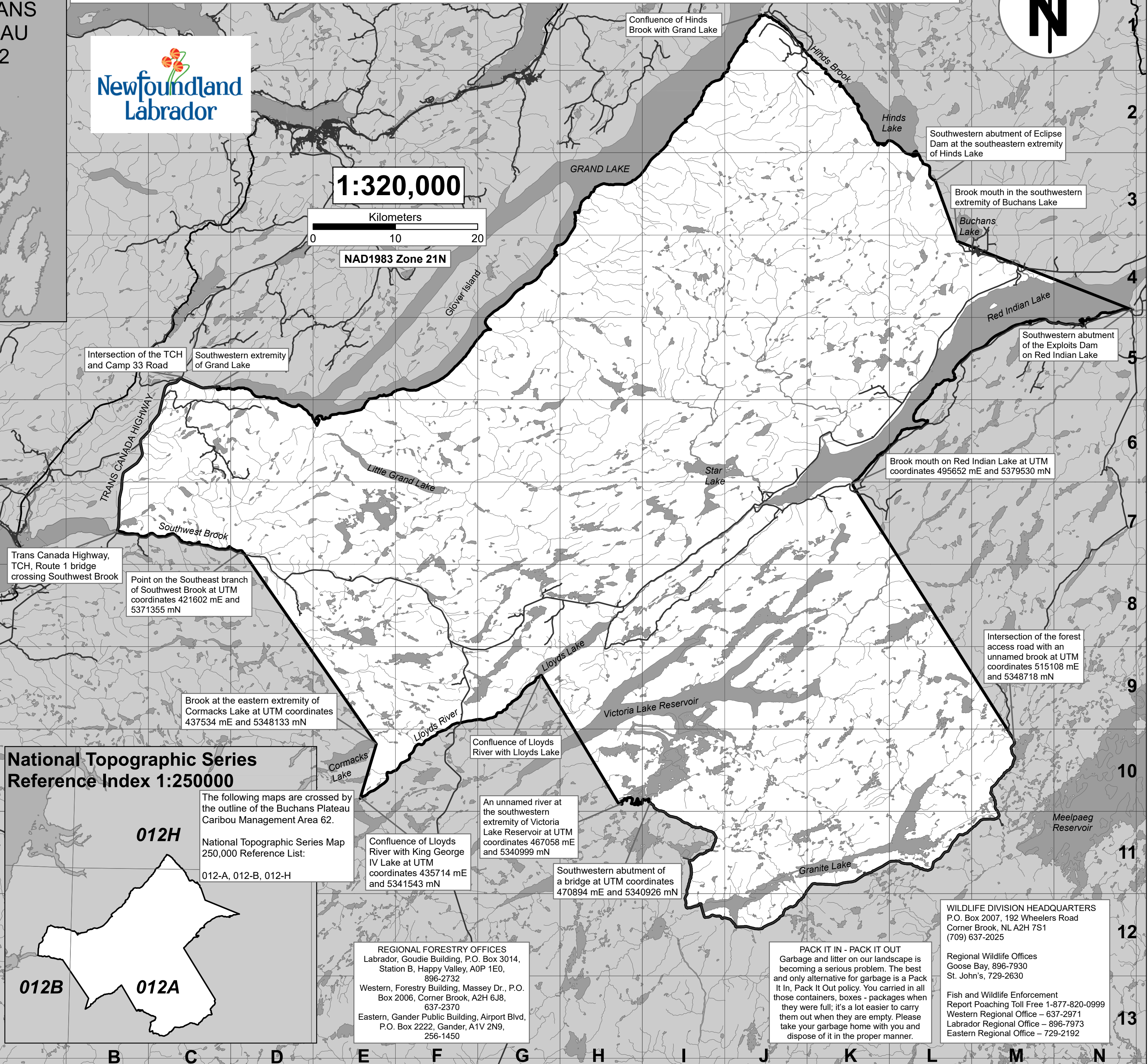
WILDLIFE DIVISION HEADQUARTERS
P.O. Box 2007, 192 Wheelers Road
Corner Brook, NL A2H 7S1
(709) 637-2025

Regional Wildlife Offices
Goose Bay, 896-7930
St. John's, 729-2630

Fish and Wildlife Enforcement
Report Poaching Toll Free 1-877-820-0999
Western Regional Office - 637-2971
Labrador Regional Office - 896-7973
Eastern Regional Office - 729-2192

Note: This map has been prepared as a convenient reference only. It is not a legal document. The Wildlife Act and Regulations and the Annual Hunting Orders published therein should be consulted for all purposes of interpreting and applying the law. Contact the Newfoundland & Labrador Wildlife Division.

Created by: Wildlife Division
Department of Fisheries, Forestry & Agriculture
Date: November 2020



- Intersection of the TCH and Camp 33 Road
- Southwestern extremity of Grand Lake
- Confluence of Hinds Brook with Grand Lake
- Southwestern abutment of Eclipse Dam at the southeastern extremity of Hinds Lake
- Brook mouth in the southwestern extremity of Buchans Lake
- Southwestern abutment of the Exploits Dam on Red Indian Lake
- Brook mouth on Red Indian Lake at UTM coordinates 495652 mE and 5379530 mN
- Intersection of the forest access road with an unnamed brook at UTM coordinates 515108 mE and 5348718 mN
- Point on the Southeast branch of Southwest Brook at UTM coordinates 421602 mE and 5371355 mN
- Brook at the eastern extremity of Cormacks Lake at UTM coordinates 437534 mE and 5348133 mN
- Confluence of Lloyds River with Lloyds Lake
- An unnamed river at the southwestern extremity of Victoria Lake Reservoir at UTM coordinates 467058 mE and 5340999 mN
- Confluence of Lloyds River with King George IV Lake at UTM coordinates 435714 mE and 5341543 mN
- Southwestern abutment of a bridge at UTM coordinates 470894 mE and 5340926 mN
- Trans Canada Highway, TCH, Route 1 bridge crossing Southwest Brook