



Sally's Cove Enclave Hunting Area 2B



Legend

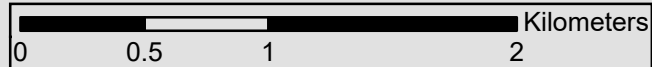
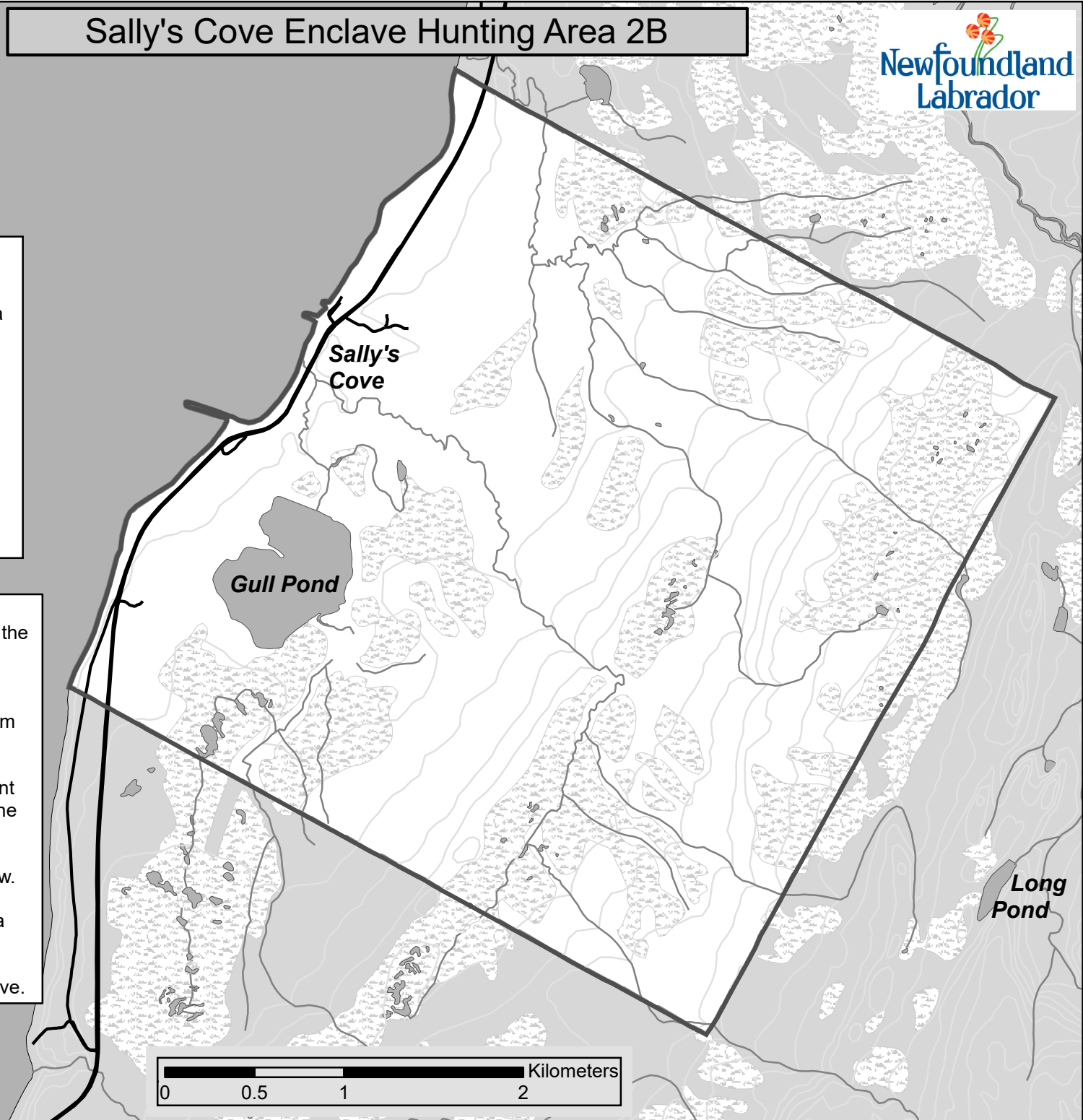
- Sally's Cove Enclave Hunting Area
- Roads
- Streams
- Contours
- Wetlands
- Waterbodies
- Gros Morne National Park

Important Information

Note that the boundary lines which delineate the Sally's Cove enclave are contained within the Gros Morne National Park boundary. You are not permitted to access these boundary line areas or the park with a firearm with a Area 2B license.

This map has been prepared as a convenient reference only. It is not a legal document. The Wildlife Act and Regulations and the annual hunting orders must be consulted for all purposes of interpreting and applying the law.

It is recommended that all persons who hold a valid Moose Management Area 2B licence consult with Park Officials if they are not positive about their location within the enclave.



Sally's Cove AREA NO. 2B

SALLY'S COVE ENCLAVE (2010)

All that area of Newfoundland commencing at a point on the Great Northern Peninsula located at *5,508,816.74* meters North and *344,627.23* meters East; then following an azimuth of *117° 29' 40"* for a distance of *2721.25* meters; then following a azimuth of *117° 18' 19"* for a distance of *757.76* meters; then following a azimuth of *117° 14' 46"* for a distance of *447.83* meters; then following a azimuth of *27° 27' 43"* for a distance of *2308.21* meters; then following a azimuth of *27° 22' 28"* for a distance of *1737.07* meters; then following a azimuth of *297° 29' 41"* for a distance of *3639.94* meters; then continuing on the aforementioned azimuth for an additional *130* meters to the ordinary low water mark of Sally's Cove; then following the shoreline of Sally's Cove in a southerly direction to the point located *93* meters on a azimuth of *117° 29' 40"* to the point of commencement.

Note: Bearings, distance and coordinates have been recorded using 3° Modified Transverse Mercator Projection (Zone 3 Newfoundland).

PACK IT IN - PACK IT OUT

Garbage and litter on our landscape is becoming a serious problem. The best and only alternative for garbage is a Pack It In, Pack It Out policy. You carried in all those containers, boxes, packages when they were full - it's a lot easier to carry them out when they are empty. Please take your garbage home with you and dispose of it in the proper manner.

Remember, leave no trace...

NOTE: This map has been prepared as a convenient reference only. It is not a legal document. The Wildlife Act and Regulations and the Annual Hunting Orders published therein should be consulted for all purposes of interpreting and applying the law. Contact the Newfoundland & Labrador Wildlife Division.

BE SAFE: WEAR BLAZE ORANGE

BIG GAME HUNTING AREA MAP AREA NO. 2B



**NEWFOUNDLAND
AND LABRADOR**
Hunting Area Map
Issued for convenience of hunters
by
Wildlife Division
Dept. of Fisheries & Land Resources

FEDERAL AND PROVINCIAL MAPS

Hunters interested in obtaining topographic maps or aerial photography may do so by contacting the address below. Refer to the map numbers on the grid.

Dept. of Fisheries & Land Resources
Air Photo and Map Library, Howley Building,
Higgins Line, St. John's, NL A1B 4J6
Tel: (709) 729-3305, 3304 FAX: (709) 729-6136
email: MAPS@GOV.NL.CA

WILDLIFE HEADQUARTERS

Corner Brook, 637-2025
P.O. Box 2007, 192 Wheelers Road
Corner Brook, NL
A2H 7S1

REGIONAL WILDLIFE OFFICES

Goose Bay, 896-7930
St. John's, 729-2630

Report Poaching
Toll Free: 1-877-820-0999

FISH AND WILDLIFE ENFORCEMENT

Corner Brook Office
P.O. Box 2006, 115 Riverside Drive,
Corner Brook, NL A2H 2N2
Tel: (709) 637-2971

REGIONAL FISH AND WILDLIFE ENFORCEMENT ZONES

Western Newfoundland Region
637-2971

Eastern Newfoundland Region
729-2192

Labrador Region
896-7973

REGIONAL FORESTRY OFFICES

Labrador, Goudie Building, P.O. Box 3014,
Station B, Happy Valley,
A0P 1E0, 896-2732

Western, Forestry Building, Massey Drive,
P.O. Box 2006, Corner Brook,
A2H 6J8, 637-2370

Eastern, Gander Public Building, Airport Blvd,
P.O. Box 2222, Gander,
A1V 2N9, 256-1450